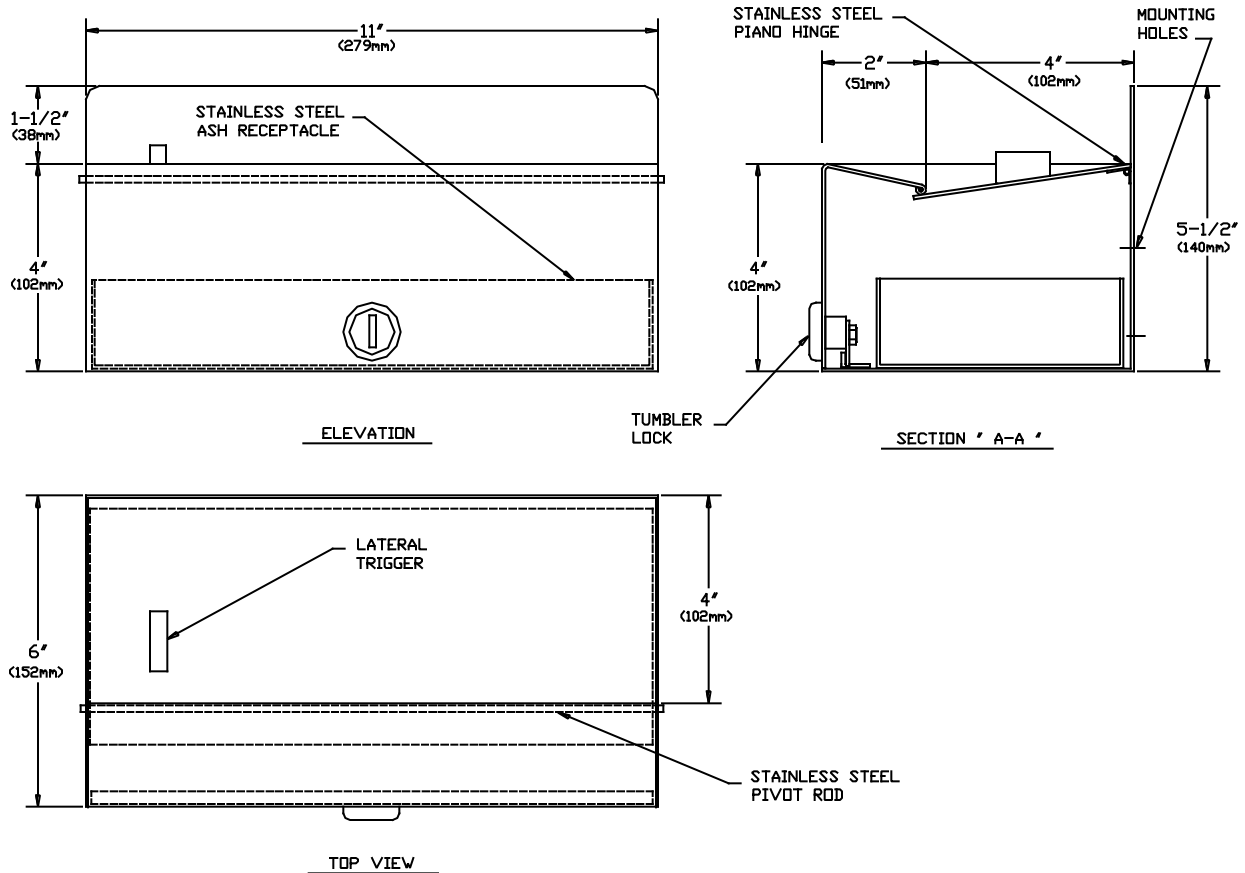




AMERICAN SPECIALTIES, INC.
441 Saw Mill River Road, Yonkers, NY 10701 (914) 476-9000

MODEL No:	0044
ISSUED:	1-87
REVISED:	9-96

SURFACE MOUNTED ASH RECEPTACLE



SPECIFICATION

Surface Mounted Large Capacity Ashtray shall be fabricated of Alloy 18-8 Stainless Steel, Type 304, (housing and door shall be N^o 18 gauge; ash blade and internal ash receptacle shall be N^o 22 gauge). All exposed surface shall be N^o 4 satin finish and be protected during shipment with a PVC film easily removable after installation. Trough shall have one trigger blade to dump ashes into receptacle that shall be mounted on a stainless steel spring tensioned piano hinge and shall return to original position. Clean out door shall be mounted on a solid stainless steel pivot rod and shall be held closed by a tumbler lock keyed alike to other ASI Washroom Equipment.

Surface Mounted Ash Receptacle shall be Model N^o 0044 as fabricated by American Specialties, Inc. 441 Saw Mill River Road Yonkers, New York 10701-4913

INSTALLATION

For general utility mount the unit 46" (1168mm) above finished floor (AFF) from bottom of housing with N^o 10 self tapping screws (supplied) through concealed mounting holes provided in cabinet back. For compliance with ADA Accessibility Guidelines, install unit so that top of the ash trough is 54" (1372mm) maximum AFF if clear floor side reach access is provided or 48" (1219mm) maximum AFF if clear floor forward reach access is provided or 46" (1168) maximum AFF if side reach over obstruction (i.e. vanity) is only provided.

OPERATION

Press the trigger to dump butts and ashes into receptacle. Access to the receptacle is obtained by unlocking the clean out door. Clean out cycle is determined by maintenance needs. Ash receptacle tray is manually dumped into appropriate bulk refuse collection bag and then replaced into unit.

Accessory Specialties

AMERICAN DISPENSER

Desert Ray Products

WATROUS INC.