



**AMERICAN SPECIALTIES, INC.**

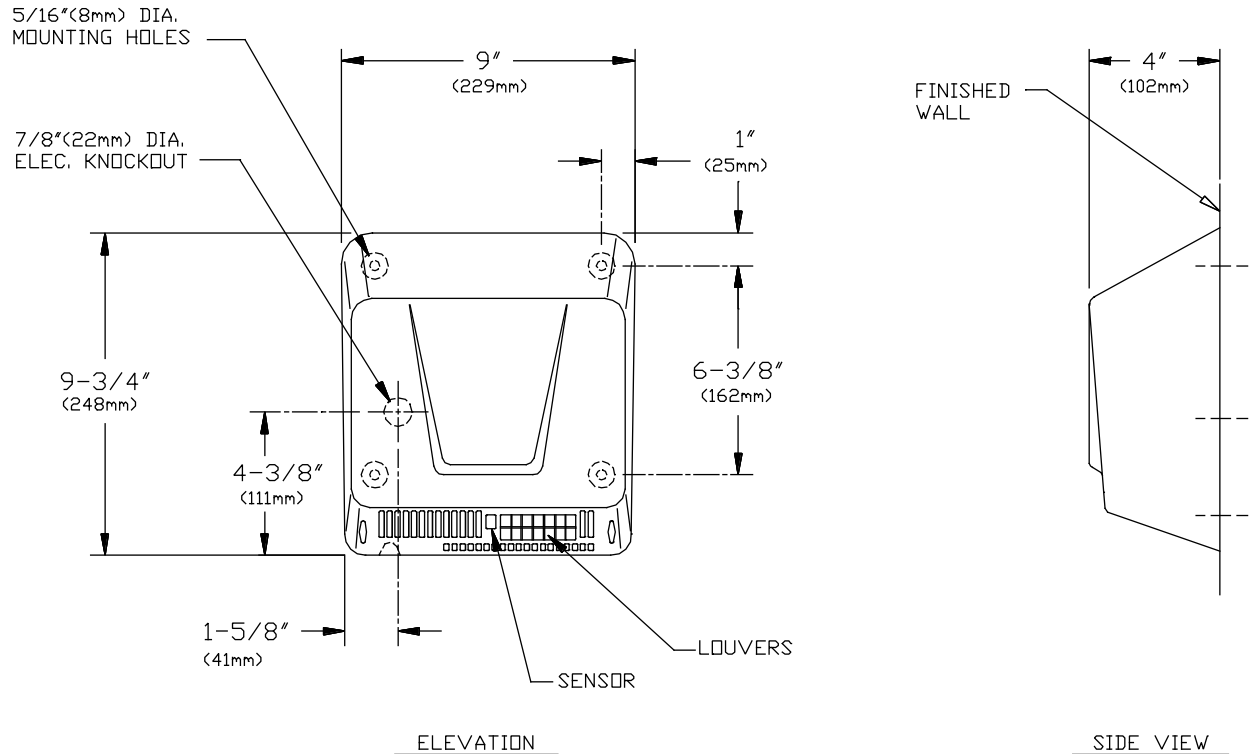
441 Saw Mill River Road, Yonkers, NY 10701 (914) 476-9000

MODEL No: 0160

ISSUED: 9-98

REVISED: 6-99

**SURFACE MOUNTED SENSOR HAND DRYER (pg 1/2)**



**SPECIFICATION**

Surface Mounted ADAAG Compliant Hand Dryer with plated steel back plate, cast zinc cover and polyester epoxy finish shall operate automatically from IR sensor activated by placing hands under sensor. Motor and heating element shall have internal resetting automatic thermal protection. Unit shall develop 140 CFM of heated air and shall provide drying time of 30 seconds. Cover shall be fabricated of one piece, heavy-duty cast zinc 3/32" (2.4mm) thick, and shall have all exposed surfaces finished with chip and scratch resistant polyester epoxy. Fixed directional air vanes shall be heavy duty, rust proof and highly tamper resistant. Air intake slots shall not allow access to internal parts. Back plate shall be furnished with vibration isolating mounting bushings. Circuitry shall have self-adjusting time-out and fail-safe off protection controlled by a microprocessor that shall detect and reject false signals and shall automatically self calibrate to provide uniform sensitivity over its entire life span. Entire unit shall be internally electrically grounded. Dryer shall be UL , CE and CSA listed. Unit shall be warranted against defects in materials or workmanship for 10 years.

**Surface Mounted Sensor Hand Dryer shall be Model № 0160 of American Specialties, Inc., 441 Saw Mill River Road, Yonkers, NY 10701-4913**

**INSTALLATION**

Unit is surface mounted on wall with four (4) 1/4" screws or bolts (not supplied) through holes (provided) in a corrosion protected heavy steel back plate. Electrical service is supplied and connected (by others) prior to installing cover. Cover is secured to back plate with recessed, hex socket cap head screws (supplied). For compliance with ADA Accessibility Guidelines, unit should be installed so that bottom of sensor lens is 54" (1372) maximum above finished floor (AFF) if clear floor side reach access is provided or 48" (1219mm) max. AFF if clear floor forward reach access only is provided. For general utility install unit so that sensor lens is 44" to 50" (1118mm to 1270mm) AFF.

**OPERATION**

Dryer is activated by user placing hands under sensor. Dryer automatically shuts off after time-out when user removes hands from sensor zone.

**Accessory Specialties**

**AMERICAN DISPENSER**

**Desert Ray Products**

**WATROUS INC.**



# AMERICAN SPECIALTIES, INC.

441 Saw Mill River Road, Yonkers, NY 10701 (914) 476-9000

MODEL No: 0160

ISSUED: 9-98

REVISED: 6-99

## SURFACE MOUNTED SENSOR HAND DRYER (pg 2/2)

### RATINGS

MODEL #	TYPE	TIMING	VOLTS	HERTZ	AMPS	WATTS	COLOR
0160	Hand	Automatic 4 second hold on	110VAC-277VAC	50/60Hz	12 max.	1150	White

MOTOR	H/P	RPM	FAN TYPE	CFM	HEATING ELEMENT	OUTPUT
Brush Type	1/6	7500	Single Inlet Centrifugal	140	1000 Watt Nichrome wire with auto reset circuit breaker	134° F ± 5@ 70° ambient room temp

### **COLOR OPTIONS\***

Unit is supplied with white finish unless color option is specified. Specify optional color (from chart below) by adding appropriate code number suffix to standard model number (i.e. 0160-40) and indicate option by circle on correct code in chart. For color chips see the **OPTIONS** section

CODE	COLOR	CODE	COLOR
40	Cool Grey	87	Desert Sand