



AMERICAN SPECIALTIES, INC.

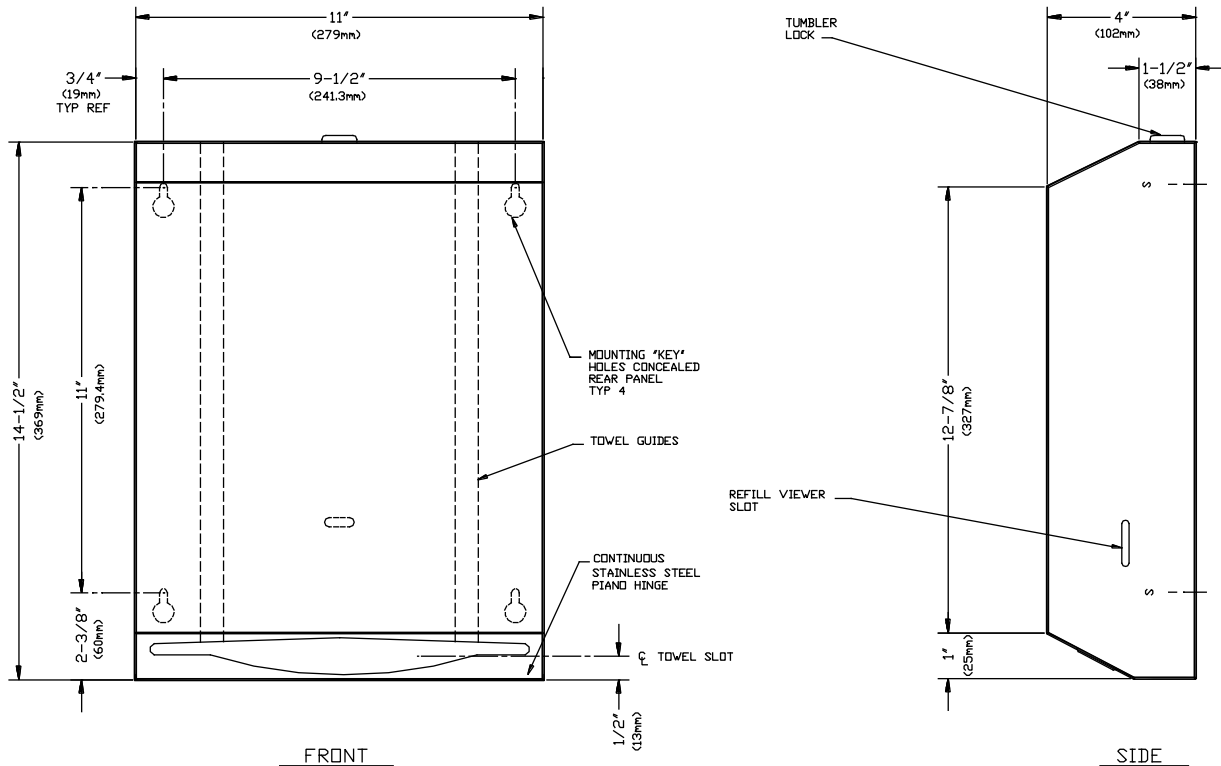
441 Saw Mill River Road, Yonkers, NY 10701 (914) 476-9000

MODEL No: 0210

ISSUED: 1-87

REVISED: 7-99

SURFACE MOUNTED PAPER TOWEL DISPENSER



SPECIFICATION

Surface Mounted Paper Towel Dispenser shall hold and dispense 525 standard multi-fold or 400 standard C-fold paper towels and shall be fabricated of alloy 18-8 stainless steel, type 304, N^o22 gauge. All exposed surfaces shall be N^o4 satin finish and be protected during shipment with a PVC film easily removable after installation. Towel dispensing slot shall have a fully hemmed-in rolled edge for snag-free dispensing and user safety. Dispenser door shall be attached to the bottom of unit with a full length 3/16" dia. stainless steel multi-staked piano hinge and shall be held closed with a tumbler lock keyed alike to other ASI Washroom Equipment. Structural assembly of body and door components shall be of welded construction. Unit shall be provided with refill viewer slots on each side and shall have internal towel stack guides. Wall below unit shall be protected against uncontrolled door drop by self-limiting body and hinge construction. Back of unit shall have keyhole slots for hanging on pre-installed screws (by others).

Surface Mounted Paper Towel Dispenser shall be Model N^o 0210 as manufactured by American Specialties, Inc., 441 Saw Mill River Road, Yonkers, New York 10701-4913

INSTALLATION

Unit is surface mounted on wall or partition using five N^o10 self tapping screws (supplied). Four mounting holes through back are "keyhole" slots for ease of installation on pre-installed screws. Center top mounting hole is horizontal slot for ease of adjustment and vandal resistant locking. For compliance with ADA Accessibility Guidelines, unit should be installed so that towel dispenser slot is 54" (1372 mm) maximum above finished floor (AFF) if clear floor side reach access is provided or 48" (1219mm) maximum AFF if clear floor forward reach access only is provided or 46" (1168mm) maximum AFF if side reach over an obstruction (vanity) is only provided.

OPERATION

Towels are self-feeding until supply is depleted. Unit may be refilled with a partial load in-place and will continue to feed properly. Low level of towel supply is indicated from 25% capacity to empty.

Accessory Specialties

AMERICAN DISPENSER

Desert Ray Products

WATROUS INC.