



**AMERICAN SPECIALTIES, INC.**

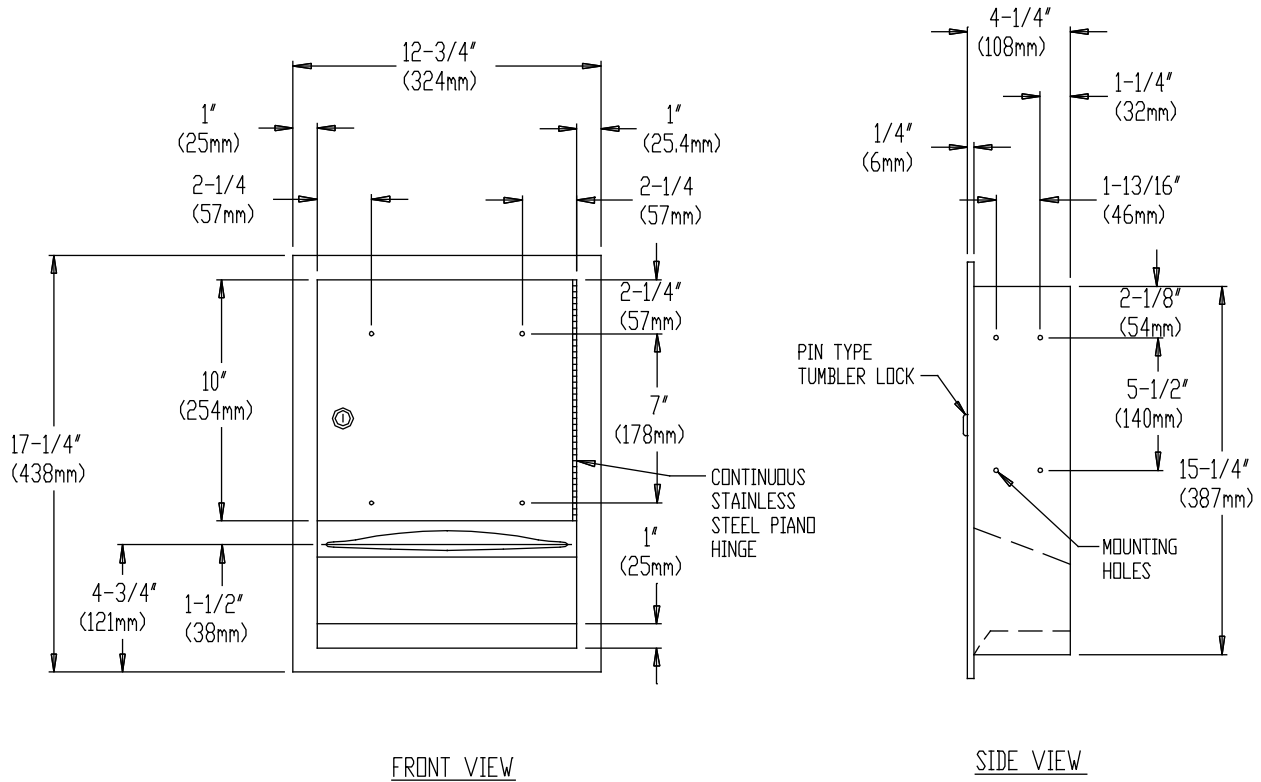
441 Saw Mill River Road, Yonkers, NY 10701 (914) 476-9000

MODEL No: 0457

ISSUED: 1-87

REVISED: 6-98

**RECESSED PAPER TOWEL DISPENSER**



**SPECIFICATION**

Recessed Paper Towel Dispenser shall hold and dispense 475 standard multi-fold or 350 standard C-fold paper towels. Towel dispenser, door, frame and cabinet shall be fabricated of alloy 18-8 stainless steel, type 304, № 22 gauge. Towel dispensing opening shall have a fully hemmed-in rolled edge for snag-free dispensing and user safety. Dispenser door shall be fabricated in double-pan construction with fiberboard filler and shall be attached to the unit with a full length 3/16" (5mm) dia. stainless steel multi-staked piano hinge and be held closed with tumbler lock keyed alike to other ASI Washroom Equipment. Face trim shall be 1" (25mm) wide formed from one piece with no mitres, welding or open seams and have 1/4" (6.35mm) square return to wall. Structural assembly of all components shall be of welded construction. All exposed surfaces shall be № 4 satin finish and be protected during shipment with a PVC film easily removable after installation.

**Recessed Paper Towel Dispenser shall be Model № 0457 as manufactured by American Specialties, Inc., 441 Saw Mill River Road, Yonkers, New York 10701-4913**

**INSTALLATION**

Unit is mounted in wall recess using №10 self tapping screws (supplied) through concealed mounting holes provided. For compliance with ADA Accessibility Guidelines, unit should be installed so that towel dispenser slot is 54" (1372mm) maximum above finished floor (AFF) if clear floor side reach access is provided or 48" (1219mm) max. AFF if clear floor forward reach access only is provided. Note that top of RWO is 3/4" (19mm) below top of unit.

**Rough wall opening (RWO) required is..... 11-1/4"W x 15-3/4"H x 4"D minimum (286mm x 400mm x 102mm)**

**OPERATION**

Towels are self-feeding until supply is depleted. Unit may be refilled with a partial load in-place and will continue to feed properly.

**Accessory Specialties**

**AMERICAN DISPENSER**

**Desert Ray Products**

**WATROUS INC.**