



AMERICAN SPECIALTIES, INC.

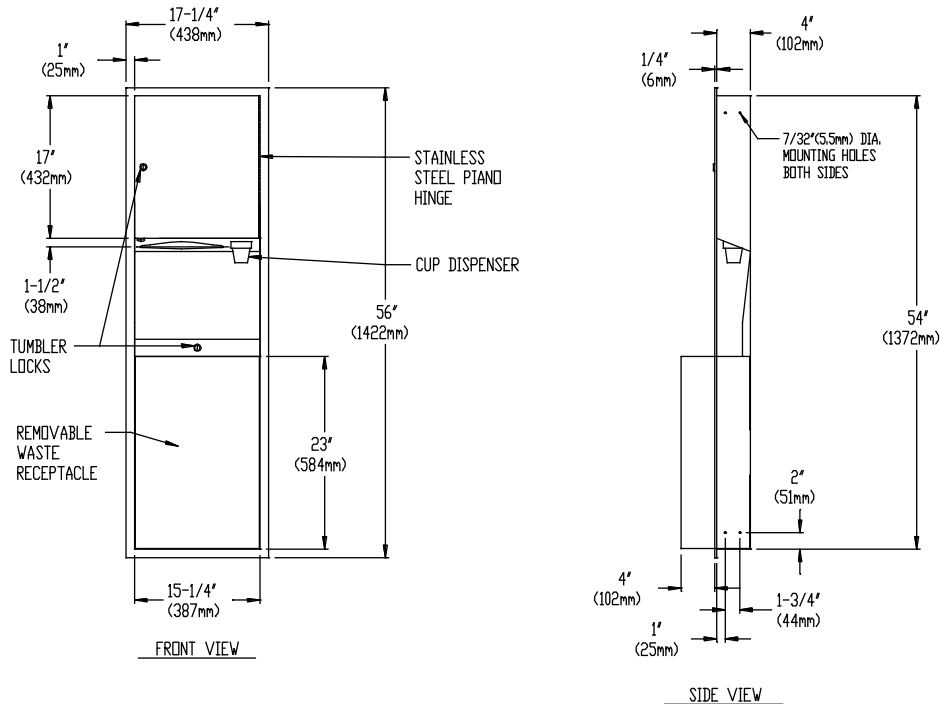
441 Saw Mill River Road, Yonkers, NY 10701 (914) 476-9000

MODEL No: 0469-C

ISSUED: 1-87

REVISED: 6-98

RECESSED PAPER TOWEL DISPENSER AND WASTE RECEPTACLE WITH CUP DISPENSER



SPECIFICATION

Recessed Paper Towel Dispenser and Waste Receptacle with Cup Dispenser shall hold and dispense 800 standard multi-fold or 600 standard C-fold paper towels, 120 (3) ounce (90ml) paper cups and shall have a waste capacity of 12 gal (46 liters). Towel dispenser, door, frame, waste container and cabinet shall be fabricated of Alloy 18-8 Stainless Steel, Type 304, № 22 gauge. All exposed surfaces shall be № 4 Satin finish and be protected during shipment with a P.V.C film easily removable after installation. Towel dispensing slot shall have a fully hemmed-in rolled edge for snag free dispensing and user safety. Door shall be fabricated in double-pan construction with fiberboard filler and shall be attached to cabinet at side with a full length 3/16" Dia. stainless steel piano hinge and be held closed with a tumbler lock keyed alike to other ASI Washroom Equipment. Waste container shall have hemmed edges for safety and shall be retained by a tumbler lock keyed alike to other ASI Washroom Equipment. Face trim shall be 1" (25 mm) wide formed from one piece with no miters, welding or open seams and have 1/4" (6mm) square return to wall. Structural assembly of all components shall be of welded construction.

Recessed Paper Towel Dispenser and Waste Receptacle with Cup Dispenser shall be Model № 0469-C as fabricated by American Specialties, Inc., 441 Saw Mill River Road, Yonkers, New York 10701-4913

INSTALLATION

Unit is mounted in wall recess using four (4) №10 self tapping screws (supplied) through concealed mounting holes provided. For compliance with ADAAG Accessibility Guidelines, unit should be installed so that towel dispenser slot is 54" (1372mm) maximum above finished floor (AFF) if clear floor side reach access is provided or 48" (1219 mm) maximum AFF if clear floor forward reach access only is provided. Note that top of RWO is 3/4" (19mm) below top of unit.

Rough Wall Opening (RWO) required is15-3/4"W x 54-1/2"H x 4"D Minimum (400mm x 1384mm x 102mm).

OPERATION

Towels and/or cups are self-feeding until supply is depleted. Unit may be reloaded with a partial load in-place and will continue to feed properly. Waste container is emptied manually on cycle determined by maintenance needs.

Accessory Specialties

AMERICAN DISPENSER

Desert Ray Products

WATROUS INC.