



**AMERICAN SPECIALTIES, INC.**

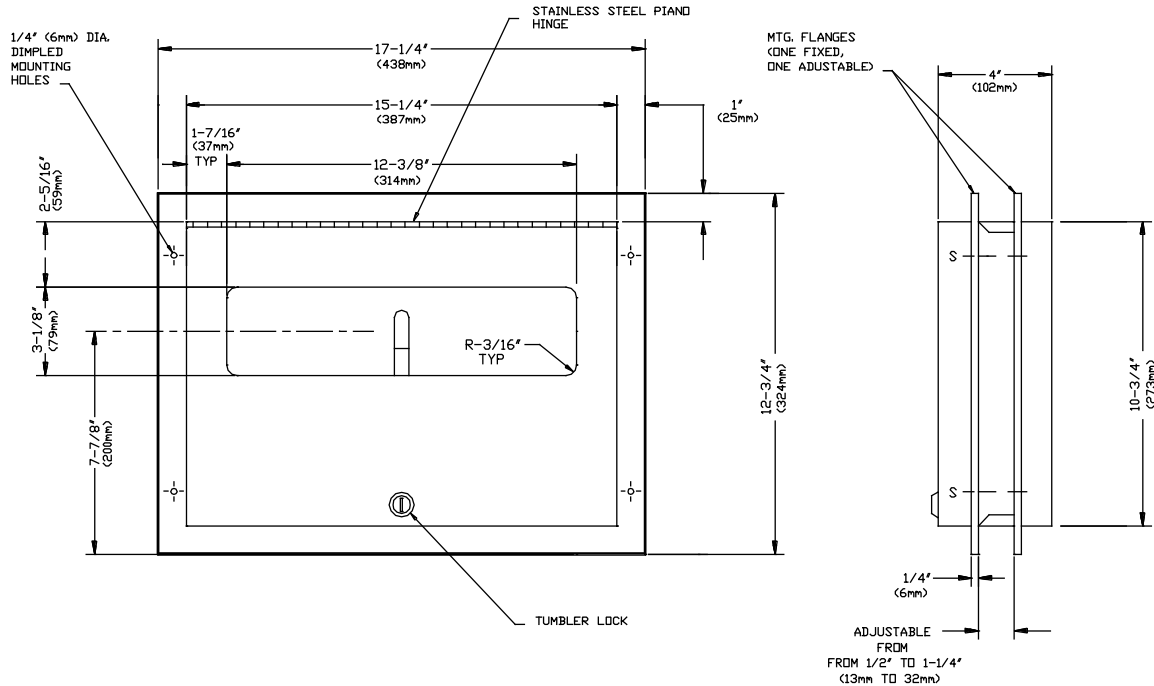
441 Saw Mill River Road, Yonkers, NY 10701 (914) 476-9000

MODEL No: 0476

ISSUED: 1-87

REVISED: 3-99

**DUAL ACCESS PARTITION MOUNTED SEAT COVER DISPENSER**



**SPECIFICATION**

Partition Mounted Dual Access Seat Cover Dispenser shall hold and dispense 500 standard single or half-fold paper toilet seat covers for each dispenser contained in supply box and shall have cabinet, frame and door fabricated of alloy 18-8 stainless steel, type 304, N<sup>o</sup> 22 gauge. All exposed surfaces shall have N<sup>o</sup> 4 satin finish protected during shipment with a PVC film which shall be easily removable after installation. Face trim frame shall be one piece construction 1" (25.4mm) wide with no welded miters and shall have a 1/4" (6.4mm) return to wall and shall adjust to accommodate partition thickness between 1/2" and 1-1/4" (13mm to 32mm). Cover dispensing slot shall have a fully deburred flat edge for snag-free dispensing and user safety. Doors shall be attached to face frame with full-length, heavy-duty 3/16" dia. (4.8mm) stainless steel multi-staked piano hinges and shall be held closed with tumbler locks keyed alike to other ASI Washroom Equipment. Structural assembly of cabinet and door components shall be of welded construction and shall have no exposed fasteners or welded seams.

**Dual Access Partition Mounted Seat Cover Dispenser shall be Model N<sup>o</sup> 0476 as fabricated by American Specialties, Inc. 441 Saw Mill River Road Yonkers, New York 10701-4913**

**INSTALLATION**

Unit is partition mounted using N<sup>o</sup>10 self tapping screws (supplied). For maximum usability and compliance with ADA Accessibility Guidelines, unit should be installed so that center of dispenser slot is between 54" (1372mm) maximum above finished floor (AFF) and 38" (965mm) minimum AFF. Note that cut-out is 3/16" (5mm) above cabinet door top and 13/16" (21mm) below top mounting flange top edge. One trim mounting flange adjusts for partition thickness of 1/2" to 1-1/4" (13mm to 32mm).

**Partition Cutout Required is ...15-5/8"W x 11-1/4"H x 1/2" to 1-1/4" thick partition (289mm x 397mm x 13mm to 32mm)**

**OPERATION**

Covers are self-feeding until supply is depleted. Unit is manually reloaded with a full box through access door on schedule determined by maintenance requirements.

Accessory Specialties

AMERICAN DISPENSER

Desert Ray Products

WATROUS INC.