



**AMERICAN SPECIALTIES, INC.**

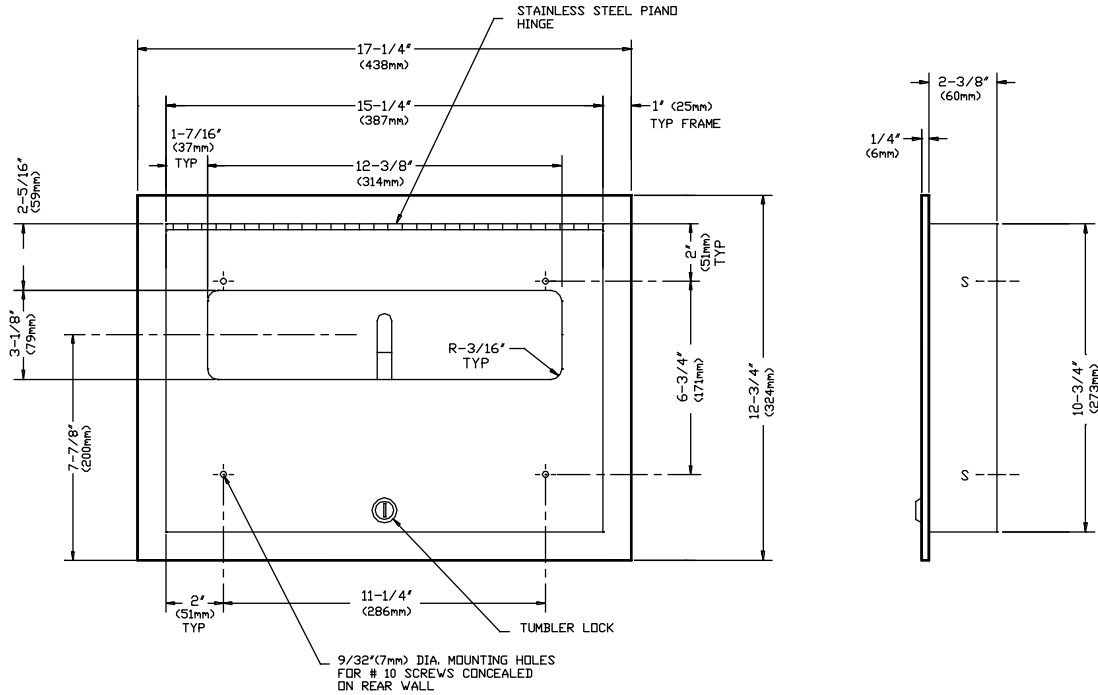
441 Saw Mill River Road, Yonkers, NY 10701 (914) 476-9000

MODEL No: 0477

ISSUED: 1-87

REVISED: 3-99

**RECESSED TOILET SEAT COVER DISPENSER**



**SPECIFICATION**

Recessed Seat Cover Dispenser shall hold and dispense 500 standard single or half-fold paper toilet seat covers contained in supply box and shall have cabinet, frame and door fabricated of alloy 18-8 stainless steel, type 304, N<sup>o</sup>22 gauge; all exposed surfaces shall have N<sup>o</sup>4 satin finish protected during shipment with a PVC film which shall be easily removable after installation. Face trim frame shall be one piece construction 1" (25.4mm) wide with no welded miters and shall have a 1/4" (6.35mm) return to wall. Cover dispensing slot shall have a fully deburred flat edge for snag-free dispensing and user safety. Door shall be attached to face frame with a full-length, heavy-duty 3/16" dia. (4.8mm) stainless steel multi-staked piano hinge and shall be held closed with a tumbler lock keyed alike to other ASI Washroom Equipment. Structural assembly of cabinet and door components shall be of welded construction and shall have no exposed fasteners or welded seams.

Recessed Toilet Seat Cover Dispenser shall be Model N<sup>o</sup> 0477 as fabricated by American Specialties, Inc., 441 Saw Mill River Road, Yonkers, New York 10701-4913

**INSTALLATION**

Unit is mounted in wall recess using four (4) N<sup>o</sup>10 self tapping screws (supplied). Mounting holes are provided in side and rear walls of cabinet and are accessible through door for installation. For compliance with ADA Accessibility Guidelines, unit should be installed so that dispenser slot is 54" (1372mm) maximum above finished floor (AFF) if clear floor side reach access is provided or 48" (1219mm) maximum AFF if clear floor forward reach access only is provided or 46" (1168mm) maximum AFF if side reach over an obstruction (eg. commode) is only provided. Note that top of dispenser slot is 2-1/2" (64mm) below top of RWO. Typical installation height for general utility is 48" (1219mm) from bottom of trim AFF (48-3/4" [1238mm] to bottom edge RWO AFF).

**Rough Wall Opening (RWO) required is.... 15-3/4"W x 11-1/4"H x 2-5/8"D (400mm x 285mm x 67mm).**

**OPERATION**

Covers are self-feeding until supply is depleted. Unit is manually reloaded with a full box through access door on schedule determined by maintenance requirements.

Accessory Specialties

AMERICAN DISPENSER

Desert Ray Products

WATROUS INC.