



**AMERICAN SPECIALTIES, INC.**

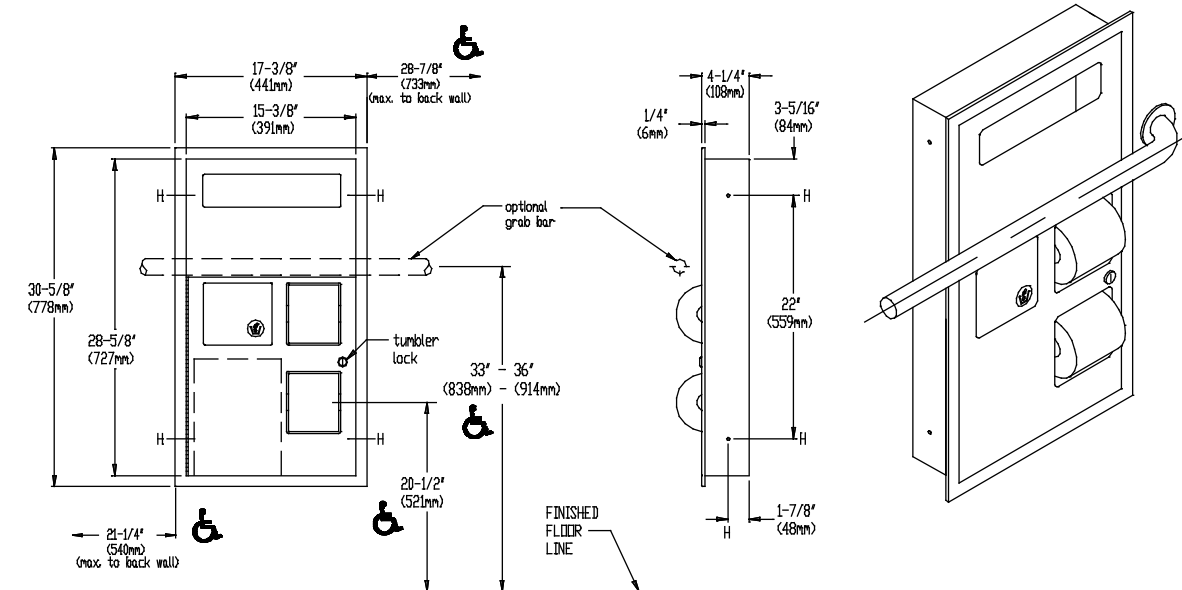
441 Saw Mill River Road, Yonkers, NY 10701 (914) 476-9000

MODEL No: 0482

ISSUED: 1-87

REVISED: 4-99

**RECESSED SEAT COVER AND TOILET PAPER DISPENSER WITH SANITARY DISPOSAL**



**SPECIFICATION**

Recessed Seat Cover and Toilet Paper Dispenser with Sanitary Disposal shall hold and dispense 500 paper seat covers and two rolls standard or 1800 sheet 4-1/2" x 5-1/4" (114mm x 133mm) toilet paper. Removable waste container shall have a capacity of 1.2 gal (4.5 liters). Door shall be fabricated of alloy 18-8 stainless steel, type 304, 18 gauge; face frame and cabinet shall be 22 gauge; all exposed surfaces shall have N<sup>o</sup>4 satin finish and be protected by a plastic PVC film easily removed after installation. Seat cover cut-out shall have a fully deburred edge for snag-free dispensing and user safety. Disposal door shall be hung on spring tensioned hinges and shall have international graphic symbol. Dispenser/waste door shall be attached to cabinet at side with a full length 3/16" (5mm) dia. stainless steel multi-staked piano hinge and shall be held closed with a tumbler lock keyed alike to other ASI Washroom Equipment. Face trim shall be 1" (25mm) wide formed from one piece with no mitres, welding or open seams and have 1/4" (6mm) square return to face of wall. Structural assembly of all components shall be of welded construction. Cabinet shall include two theft resistant toilet tissue spindles and removable stainless steel waste receptacle.

**Recessed Seat Cover and Toilet Paper Dispenser with Sanitary Disposal ( for use with optional grab bar) shall be Model N<sup>o</sup> 0482 as fabricated by American Specialties, Inc., 441 Saw Mill River Road, Yonkers, New York 10701-4913**

**INSTALLATION**

Unit is mounted in wall recess using four (4) N<sup>o</sup> 10 self tapping screws (supplied) through concealed mounting holes provided. Unit should be installed with top of trim 47" to 51" (1194mm to 1295mm) above finished floor (AFF). Note that top of RWO is 3/4" (19mm) below top of face trim. For compliance with ADA Accessibility Guidelines, unit MUST be installed so that top of face trim is 43-1/2" (1105mm) AFF and center line of grab bar located at 33" to 36" (838mm to 914mm) AFF.

**Rough Wall Opening (RWO) required is..... 15-3/4"W x 29"H x 4"D (400mm x 737mm x 102mm)**

**OPERATION**

Seat covers are self-feeding until supply is depleted. Toilet paper rolls feed freely until depleted, level of supply is constantly visible for low level warning. Waste container is emptied manually on cycle determined by maintenance needs. Toilet paper rolls, paper seat covers and waste receptacle are serviced by unlocking and opening door.

Accessory Specialties

AMERICAN DISPENSER

Desert Ray Products

WATROUS INC.