



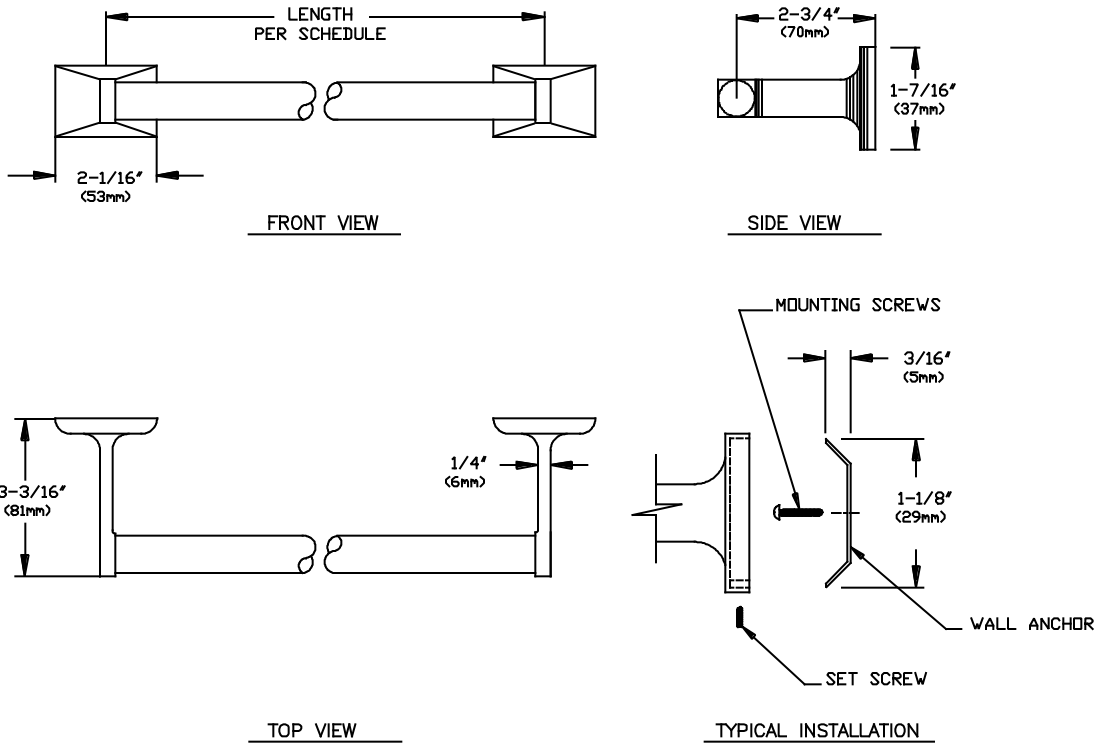
**AMERICAN SPECIALTIES, INC.**  
441 Saw Mill River Road, Yonkers, NY 10701 (914) 476-9000

MODEL No: 0755-Z

ISSUED: 1-87

REVISED: 1-91, 7-92

**TOWEL BAR UNIT**



**SPECIFICATION**

Towel Bar Unit shall have brackets fabricated of triple chrome plated rust proof Zamak. Bar shall be 3/4" (19mm) dia. 21 gauge (.032 in. < .81mm wall) triple chrome plated steel tubing. Unit shall be mounted by two end brackets. Tapped holes in bracket flange base shall have tamper resistant stainless steel hex socket set screws to lock brackets to concealed pre-mounted wall plates. Unit shall meet appropriate FHA and other Federal Specifications.

Towel Bar Unit shall be Model N<sup>o</sup> 0755-Z as fabricated by American Specialties, Inc. 441 Saw Mill River Road, Yonkers, New York 10701-4913

**INSTALLATION**

Wall brackets are surface mounted using N<sup>o</sup>10 self tapping screws (supplied). Each end of unit is secured to bracket by tightening stainless steel hex socket set screws on flanges. For compliance with ADA Accessibility Guidelines, unit should be installed 54" (1372mm) maximum above finished floor (AFF) if clear floor side reach access is provided or 48" (1219mm) maximum AFF if clear floor forward reach access only is provided or 46" (1168mm) maximum AFF if side reach over an obstruction is only provided (ie: vanity). Typical mounting height is 50" (1270mm) from finished floor (AFF) to centerline of bar.

**NOTE**

Towel bar is available in the standard lengths charted below. Specify correct model number for length required with quantity ordered.

MODEL N <sup>o</sup>	LENGTH	QUANTITY
0755-Z 18	18" (457mm)	
0755-Z 24	24" (610mm)	
0755-Z 30	30" (762mm)	
0755-Z 36	36" (914mm)	

Accessory Specialties

AMERICAN DISPENSER

Desert Ray Products

WATROUS INC.