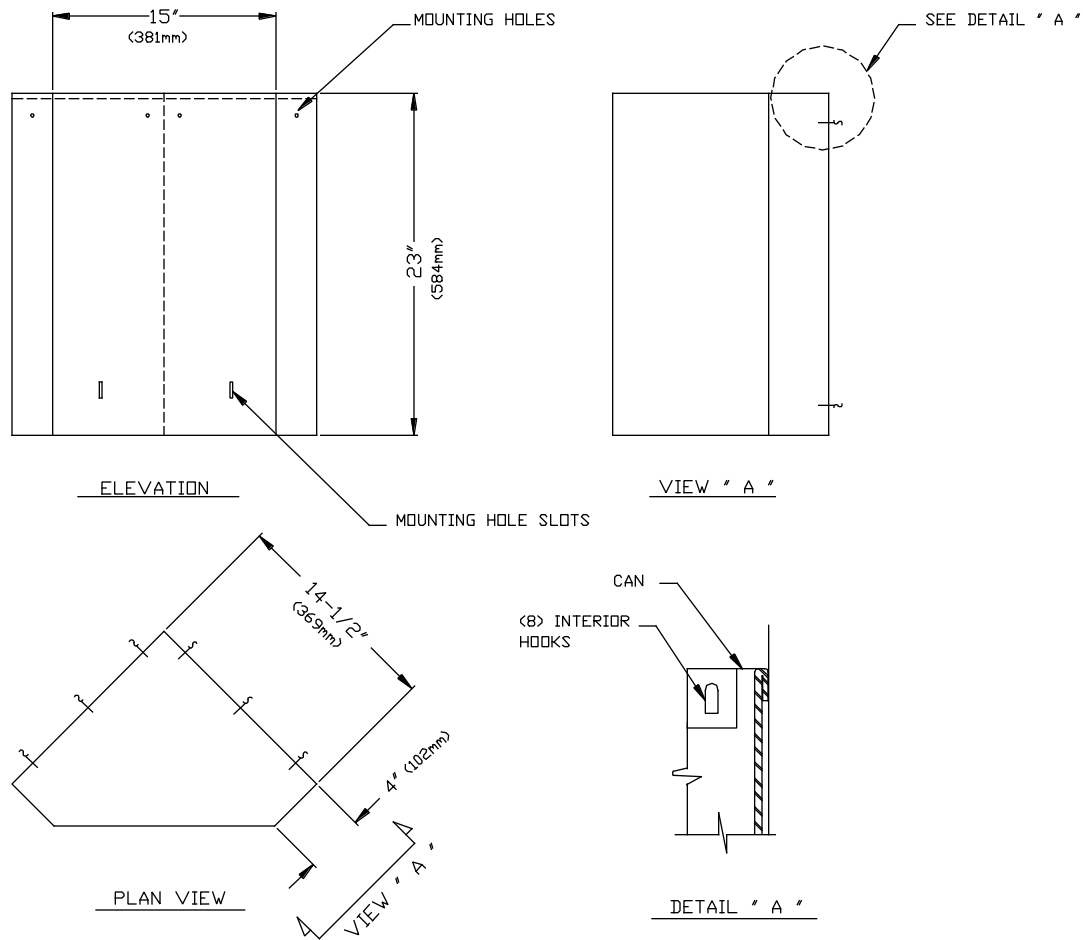




AMERICAN SPECIALTIES, INC.
441 Saw Mill River Road, Yonkers, NY 10701 (914) 476-9000

MODEL No:	0829
ISSUED:	1-87
REVISED:	9-96

SURFACE MOUNTED CORNER WASTE RECEPTACLE



SPECIFICATION

Surface Mounted Corner Waste Receptacle shall hold 2.13 cu. ft. (.06m³) or 16 gal (60 liters) of dry/solids waste and shall be fabricated of alloy 18-8 stainless steel, type 304, N^o22 gauge. All exposed surfaces shall have a N^o4 satin finish and shall be protected during shipment with a PVC film easily removable after installation. Structural assembly of container components shall be of welded construction. Unit shall have no exposed fastening devices or welded seams. A liner disposal bag of heavy gauge vinyl with reinforced edges and rust-proof grommets shall be held in place by clips permanently mounted on inside walls of waste can. Mounting brackets and screws shall be supplied. Unit shall be easily installed and be capable of tamper-resistant mounting.

Surface Mounted Corner Waster Receptacle shall be Model N^o 0829 as fabricated by American Specialties, Inc. 441 Saw Mill River Road Yonkers, New York 10701-4913.

INSTALLATION

Unit is surface mounted on wall by securing to two (2) horizontal wall brackets and two (2) support hats (wall mounted) using N^o 10 self tapping screws (supplied) through holes provided in brackets. For maximum usability and compliance with ADA Accessibility Guidelines, unit should be installed so that top edge is 30" (762mm) maximum above finished floor.

OPERATION

User deposits waste material. Maintenance schedule determines trash removal cycle. Unit is emptied by removing collection liner bag to empty into appropriate bulk collection container. Liner is washable and reusable and replacements are available should they be required.

Accessory Specialties

AMERICAN DISPENSER

Desert Ray Products

WATROUS INC.