



**AMERICAN SPECIALTIES, INC.**

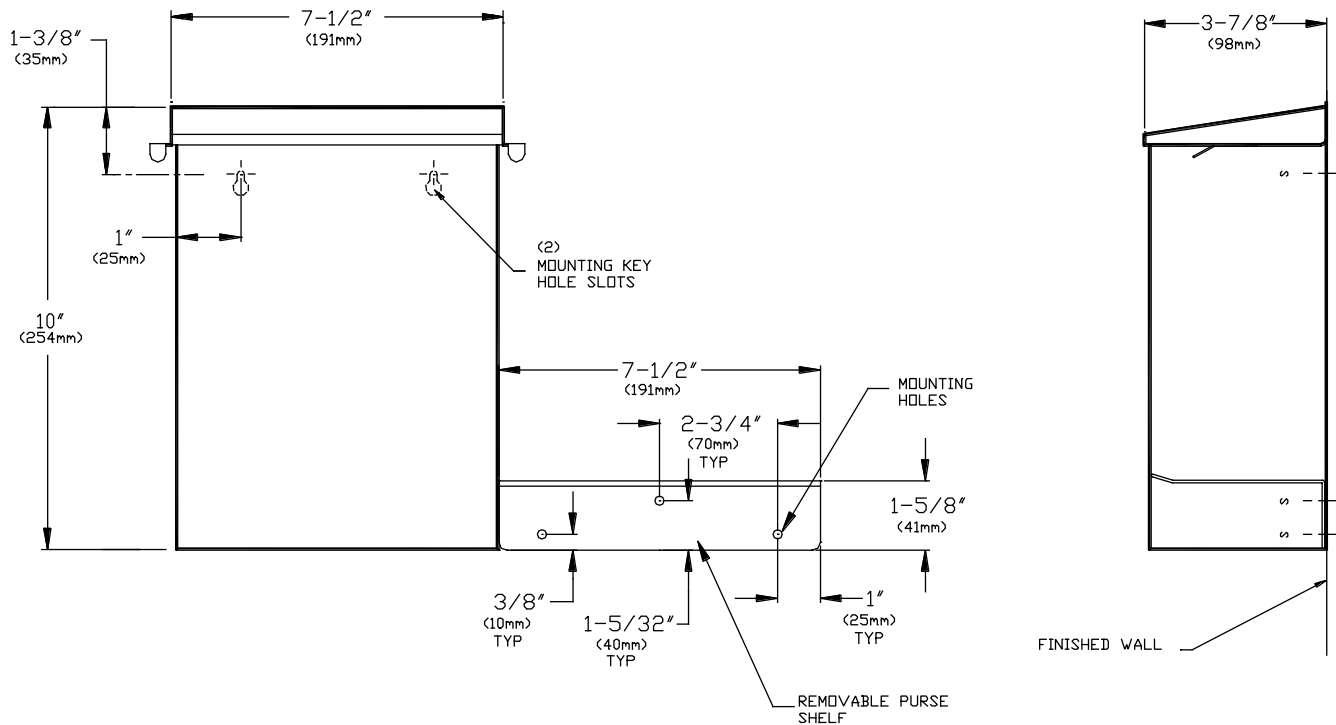
441 Saw Mill River Road, Yonkers, NY 10701 (914) 476-9000

MODEL No: 0852-SH

ISSUED: 1-87

REVISED: 8-98

**SURFACE MOUNTED SANITARY NAPKIN DISPOSAL WITH SHELF**



**SPECIFICATION**

Surface Mounted Sanitary Napkin Disposal with Shelf shall have door and cabinet fabricated of alloy 18-8 stainless steel, type 304, N<sup>o</sup> 22 gauge. All exposed surfaces shall be N<sup>o</sup> 4 satin finish and be protected during shipment with a PVC film easily removable after installation. Top cover door shall be attached to cabinet with a full length 3/16" dia. stainless steel multi-staked piano hinge. Top cover shall have lift handles at each end fabricated as one piece with top. Removable purse shelf shall be fabricated of N<sup>o</sup>16 gauge same grade stainless steel with a N<sup>o</sup> 4 satin finish to match cabinet.

Surface Mounted Sanitary Napkin Disposal with Shelf shall be Model N<sup>o</sup> 0852-SH as fabricated by American Specialties, Inc. 441 Saw Mill River Road Yonkers, New York 10701-4913

**INSTALLATION**

Unit is surface mounted on wall or partition using N<sup>o</sup> 10 self tapping screws (supplied). Two (2) mounting holes through back are "keyhole" slots for ease in hanging unit on pre-installed screws. Shelf is mounted to wall or partition with three (3) N<sup>o</sup>. 10 self tapping screws provided. For compliance with ADA Accessibility Guidelines, unit should be installed so that top of cover is 30" (762mm) above finished floor.

**OPERATION**

User lifts lid to deposit waste material. Maintenance schedule determines trash removal cycle. Unit is emptied by top door and removing wax paper collection bag. Waxed paper liner bags are furnished by janitorial personnel.

Accessory Specialties

AMERICAN DISPENSER

Desert Ray Products

WATROUS INC.