



AMERICAN SPECIALTIES, INC.

441 Saw Mill River Road, Yonkers, NY 10701 (914) 476-9000

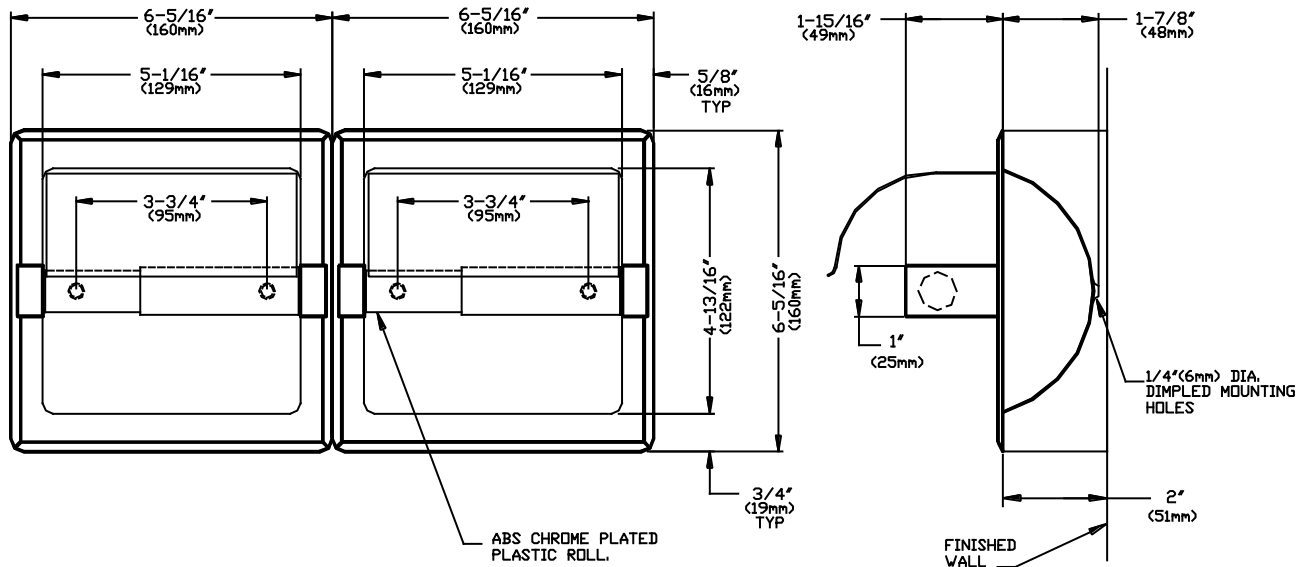
MODEL No: 74022-HSM

ISSUED: 1-87

REVISED: 1-98

SURFACE MOUNTED DUAL ROLL TOILET PAPER HOLDER WITH HOOD

- Specify Model Required Model 74022-HBSM Bright Polished Stainless Steel
 Model 74022-HSSM Satin Finished Stainless Steel



SPECIFICATION

Surface Mounted Dual Roll Toilet Paper Holder with Hood shall hold and dispense two (2) rolls of standard core roll tissue, up to 6" (152mm) in diameter. Unit shall be fabricated of 18-8 stainless steel, type 304. Hood shall be attached to top of unit with a full length brass pivot rod. Rollers shall be fabricated of chrome plated, high impact-resistant ABS plastic. All exposed surfaces shall have (bright or satin) finish.

Surface Mounted Dual Roll Toilet Paper Holder with Hood shall be Model № (74022-HBSM or №74022-HSSM) of American Specialties, Inc., 441 Saw Mill River Road, Yonkers, New York 10701- 4913

INSTALLATION

Unit is surface mounted on wall or partition using №10 self tapping screws (supplied). For compliance with ADA Accessibility Guidelines, unit should be installed with centerline of roller 19" (483mm) min. AFF to 44" (1118mm) max. AFF and forward edge of roll no further than 36" (914mm) from back wall behind commode.

OPERATION

Spindle revolves freely. Toilet paper delivery is controlled by friction of hood on roll. Spring loaded spindle holds roll until core is removed.

Accessory Specialties

AMERICAN DISPENSER

Desert Ray Products

WATROUS INC.