



AMERICAN SPECIALTIES, INC.

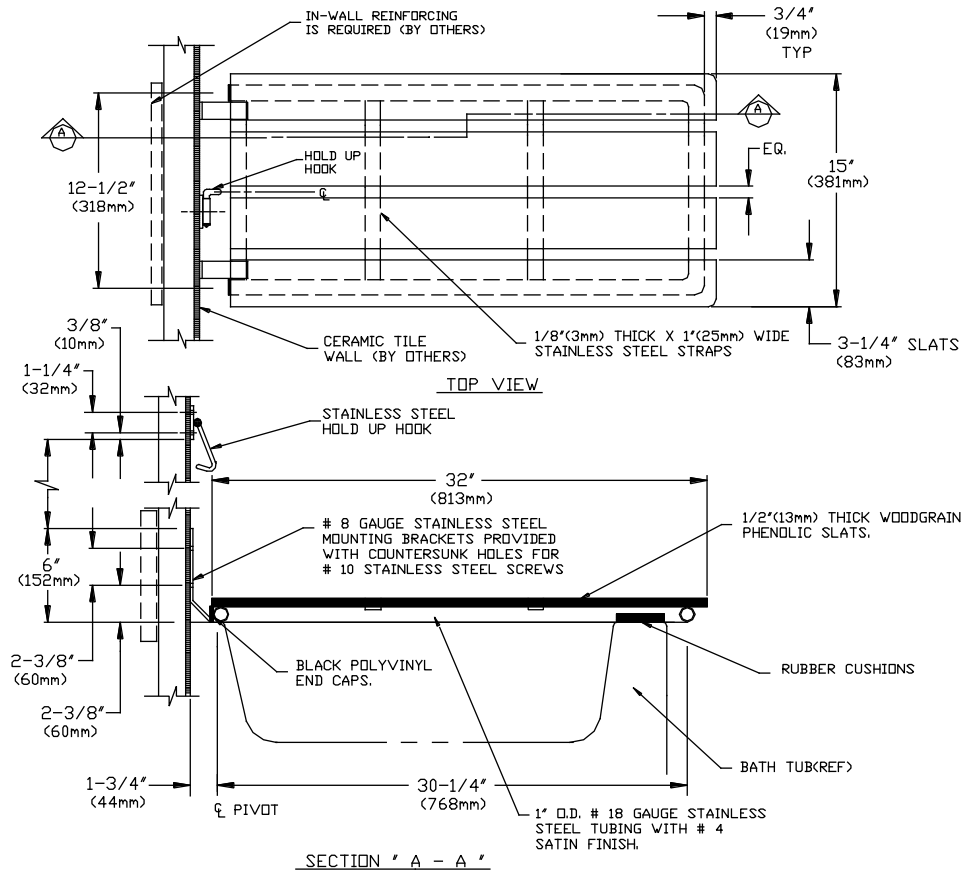
441 Saw Mill River Road, Yonkers, NY 10701 (914) 476-9000

MODEL No: 8358

ISSUED: 1-87

REVISED: 3-99

FOLD-UP PHENOLIC SLAT BATHTUB SEAT



SPECIFICATION

Fold-Up Phenolic Slat Bathtub Seat shall be fabricated of 1" (25mm) OD alloy 18-8 type 304 stainless steel tubing with a #4 satin finish and slats that shall be 1/2" (13mm) thick solid phenolic with ivory color on top and bottom surfaces and shall have black edges. Mounting and retainer brackets shall be stainless steel 8 gauge (4.2mm) and shall be provided with countersunk holes for #10 stainless steel screws. Structural assembly shall be of welded construction and all exposed edges and corners shall be radiused and deburred. Mounting brackets shall be permanently attached to seat frame. Unit shall have rubber grip pads permanently applied to surfaces that come into contact with tub. Wall mounted retainer hook shall hold seat up when in storage position and shall be supplied loose.

Fold-Up Phenolic Slat Bathtub Seat shall be Model N° 8358 as manufactured by American Specialties, Inc., 441 Saw Mill River Road, Yonkers, NY 10701-4913

INSTALLATION

This unit is surface mounted. Installer/construction contractor must provide concealed anchor plate or blocking as specified in construction documents or as required by local building codes prior to wall finishing. Fasten mounting brackets to concealed anchor or blocking plate with appropriate hardware. Alternatively other suitable fastener systems (by others) may be used. The unit is placed directly over the tub with the mounting bracket knuckle 1/4" to 3/8" (6mm to 10mm) above the tub so that when in down position the seat rests upon the tub rim and the gripper pads cushion the seat from the tub and provide a non-skid temporary placement for use.

Accessory Specialties

AMERICAN DISPENSER

Desert Ray Products

WATROUS INC.