



AMERICAN SPECIALTIES, INC.

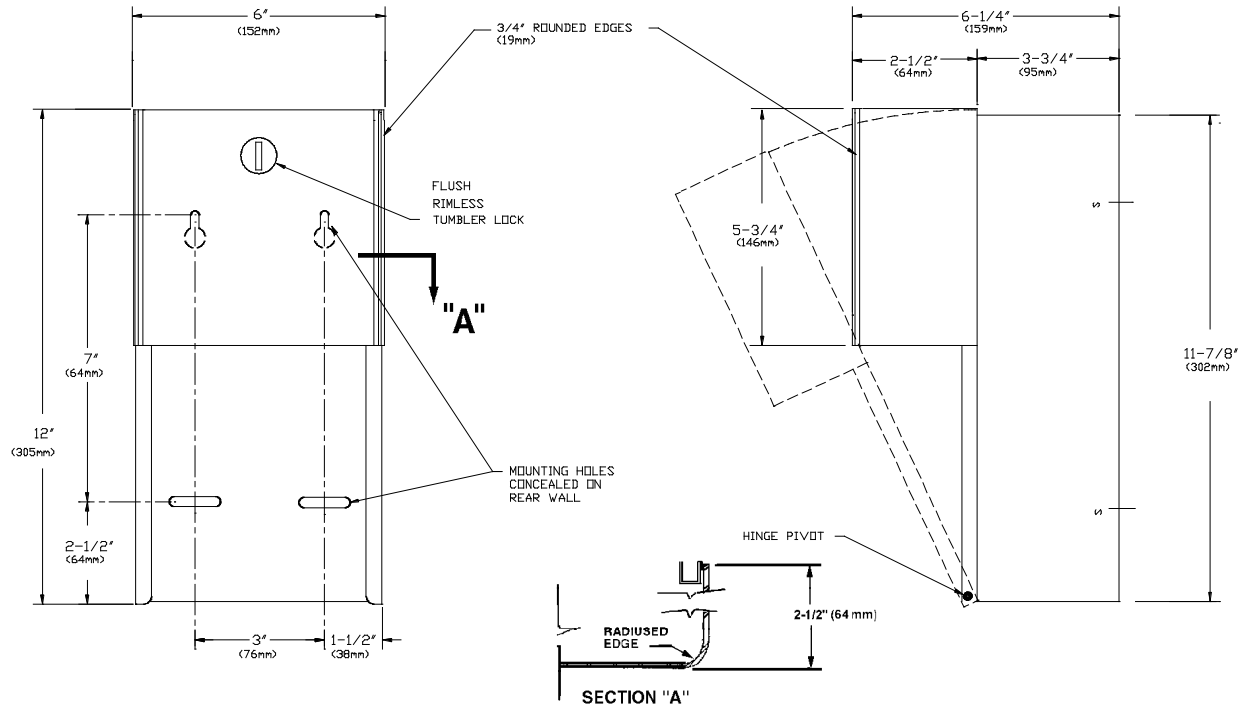
441 Saw Mill River Road, Yonkers, NY 10701 (914) 476-9000

MODEL No: 9030

ISSUED: 7-98

REVISED: 10-99

PROFILE COLLECTION SURFACE MOUNTED TWIN HIDE-A-ROLL TOILET PAPER DISPENSER



SPECIFICATION

Profile Collection Surface Mounted Twin Hide-A-Roll Toilet Paper Dispenser shall hold and dispense two (2) standard or two (2) 5-1/4" dia. (133 mm) 1800 sheets tissue rolls and shall have door, door frame, and dispensing mechanism fabricated of alloy 18-8 stainless steel, type 304, 18 gauge (1.2mm); cabinet body shall be same grade, 22 gauge (.8mm). All exposed surfaces shall be N^o 4 satin finish and be protected during shipment with a PVC film easily removable after installation. Internal mechanism levers shall be fabricated of molded high-impact resistant plastic for smooth operation. Structural assembly of body and door components shall be of welded construction. Door hinge shall be of heavy-duty stainless steel 3/16" (4.8mm) dia. rivets. Door shall have 3/4" (19mm) rounded vertical edges with all corners welded and ground smooth with no open miters shall be held closed with a flush rimless tumbler lock keyed alike to other ASI washroom equipment. Vandal resistant rollers shall be of molded high-impact resistant plastic with integral molded-in stainless steel end pins and two (2) rollers shall be supplied.

Profile Collection Surface Mounted Twin Hide-a-Roll Toilet Paper Dispenser shall be Model N^o 9030 as fabricated by American Specialties, Inc., 441 Saw Mill River Road, Yonkers, New York 10701-4913

INSTALLATION

Unit is surface mounted on wall or partition using four (4) N^o10 self tapping screws (supplied). Top two mounting holes through back are "keyhole" slots for ease in hanging unit on pre-installed screws. Bottom two mounting holes are horizontal slots for ease of adjustment. For compliance with ADA Accessibility Guidelines, top of unit should be installed 29" (737 mm) above finished floor.

OPERATION

Reloading instructions are printed on graphic label inside door. Bottom roll is depleted prior to top roll automatically dropping into lower position for use. Empty rollers can not be removed without key unlocking door.

Accessory Specialties

AMERICAN DISPENSER

Desert Ray Products

WATROUS INC.